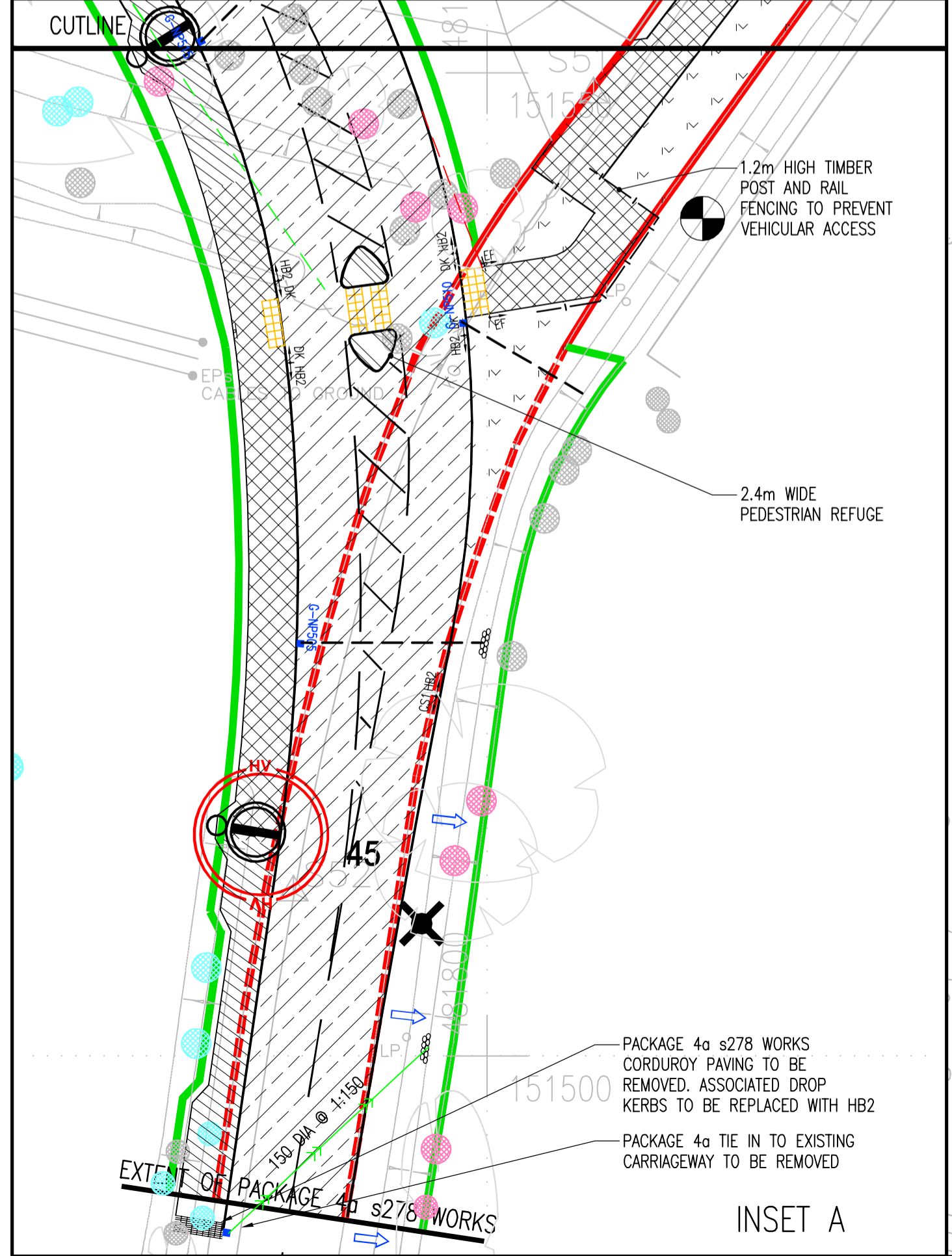


- NOTES:
- HIGHWAY BOUNDARY INTERPRETED FROM HAMPSHIRE COUNTY COUNCIL RECORDS
 - ALL DIMENSIONS ARE IN METRES UNLESS STATED OTHERWISE
 - THIS DRAWING IS TO BE READ IN CONJUNCTION WITH ALL OTHER RELEVANT ENGINEERING DRAWINGS, DETAILS AND SPECIFICATIONS.
 - ANY DISCREPANCIES SHOULD BE REPORTED TO THE ENGINEER IMMEDIATELY SO THAT CLARIFICATION CAN BE SOUGHT PRIOR TO THE COMMENCEMENT OF WORK.
 - HIGHWAY WORKS ARE TO BE IN ACCORDANCE WITH HAMPSHIRE COUNTY COUNCIL REQUIREMENTS AND THE HIGHWAYS AGENCY SPECIFICATION FOR HIGHWAY WORKS.
 - REFER TO DRG No. 103/GA/192 FOR PROPOSED ROAD CONSTRUCTION DETAILS.
 - REFER TO DRG No. 103/TS/190-191 FOR DETAILS OF SIGNS, LINES & STREET LIGHTING.
 - REFER TO DRG No. 103/GA/166 FOR DETAILS OF TREE REMOVAL.
 - REFER TO DRG No. 103/RP/195 FOR PROPOSED CONTOUR PLAN, PROPOSED CARRIAGEWAY CHAINAGES, CROSS SECTIONS & LONG SECTIONS.
 - ALL VEGETATION IS TO BE CLEARED TO A HEIGHT OF 3.0m ABOVE CYCLE/FOOTWAY AND 6.0m ABOVE CARRIAGEWAY

- KEY:
- CATEGORY 'A' TREES
 - CATEGORY 'B' TREES
 - CATEGORY 'C' TREES
 - CATEGORY 'D' TREES
 - EXISTING HIGHWAY BOUNDARY TO BE RETAINED
 - EXISTING HIGHWAY BOUNDARY TO BE RELEASED
 - PROPOSED HIGHWAY BOUNDARY
 - HB2 HALF BATTERED (HB2) KERB TYPE PC1 100mm UPSTAND (REFER TO HCC DRG. No. HCC9/C/010A)
 - DK DROPPED CROSSING (FLUSH) KERB TYPE PCA AND TRANSITION KERB (REFER TO HCC DRG. No. HCC9/C/010A, 060B & 065B)
 - EF FLAT TOPPED CONCRETE EDGING 50x150 (REFER TO HCC DRG. No. HCC9/C/045C TYPE 1a)
 - CS1 CHANNEL BLOCK TYPE CS1 (125mm x 255mm) LAID FLUSH WITH TRANSITION KERB
 - BN (25) BULL NOSE KERB TYPE PC3 (25mm UPSTAND) REFER TO HCC DRG NO. HCC9/C/010A
 - PROPOSED CARRIAGEWAY (FOR ROAD PAVEMENT CONSTRUCTION DETAILS REFER TO DRG No. 103/GA/192 & 103/SD/190)
 - PROPOSED FOOTWAY / CYCLEWAY (REFER TO HCC DRG No. HCC9/C/045C TYPE 1A)
 - NO DIG FOOTWAY/CYCLEWAY CONSTRUCTION (REFER TO DRG No. 103/SD/116)
 - ISLAND CONSTRUCTION (FULL PAVEMENT CONSTRUCTION WITH CAPPING & SUB-BASE BENEATH)
 - PROPOSED VERGE - 300mm TOPSOIL AND GRASS SEED IN ACCORDANCE WITH SPECIFICATION
 - CROSSOVER CONSTRUCTION (REFER TO HCC DRG. No. HCC9/M/035-C)
 - TACTILE PAVING SHOWN TO SCALE ON DRAWING (BUFF BLISTER FLAGS. REFER TO HCC DRG No. HCC9/C/060B & 065B)
 - HAZARD CORDOURY TACTILE PAVING (RIBS AT 50mm CENTRES & 6mm HIGH, 20mm WIDE) (REFER TO HCC DRG No. HCC9/C/065B FOR BEDDING DETAIL)
 - EXISTING LIGHTING COLUMN TO BE RETAINED
 - PROPOSED LIGHTING COLUMN
 - VISIBILITY SPY



REV	DATE	BY	DESCRIPTION	CHK	APP
E	20/03/2013	SJW	HCC COMMENTS		LRB
D	28/02/2013	SJW	TREES ADDED TO VERGE		LRB
C	12/02/2013	AJM	AMENDMENTS MADE FOLLOWING THE RECEIPT OF STREET LIGHTING DESIGN		LRB
B	31/01/2013	SJW	ATTENUATION BASIN ADDED, RSA S2 COMMENTS		LRB
A	11/01/2013	SJW	FIRST ISSUE		LRB

DRAWING STATUS: FOR TECHNICAL APPROVAL

Regus House, Southampton International Business Park
 George Curl Way, Southampton, Hampshire, SO18 2RZ
 Tel: +44 (0)2380 302000 Fax: +44 (0)2380 302001
 http://www.wspgroup.com

CLIENT: TAYLOR WIMPEY

ARCHITECT: DHA

PROJECT: QUEEN ELIZABETH BARRACKS

TITLE: s278 WORKS - PACKAGE 4b
 NAISHES LANE / SANDY LANE ROUNDABOUT
 GENERAL ARRANGEMENT, VISIBILITY & SURFACE FINISHES SHEET 1 OF 2

SCALE @ A1:	CHECKED:	APPROVED:
1:250	DI	LRB
CAD FILE:	DESIGN DRAWN:	DATE:
103-GA-190	SJW	January 2013
PROJECT NO:	DRAWING NO:	REV:
11790103	103/GA/190	E

© WSP Group Ltd

Reproduced from the Ordnance Survey map with the permission of the Controller of Her Majesty's Stationery Office. Licence no. 10004955. Crown copyright reserved.