

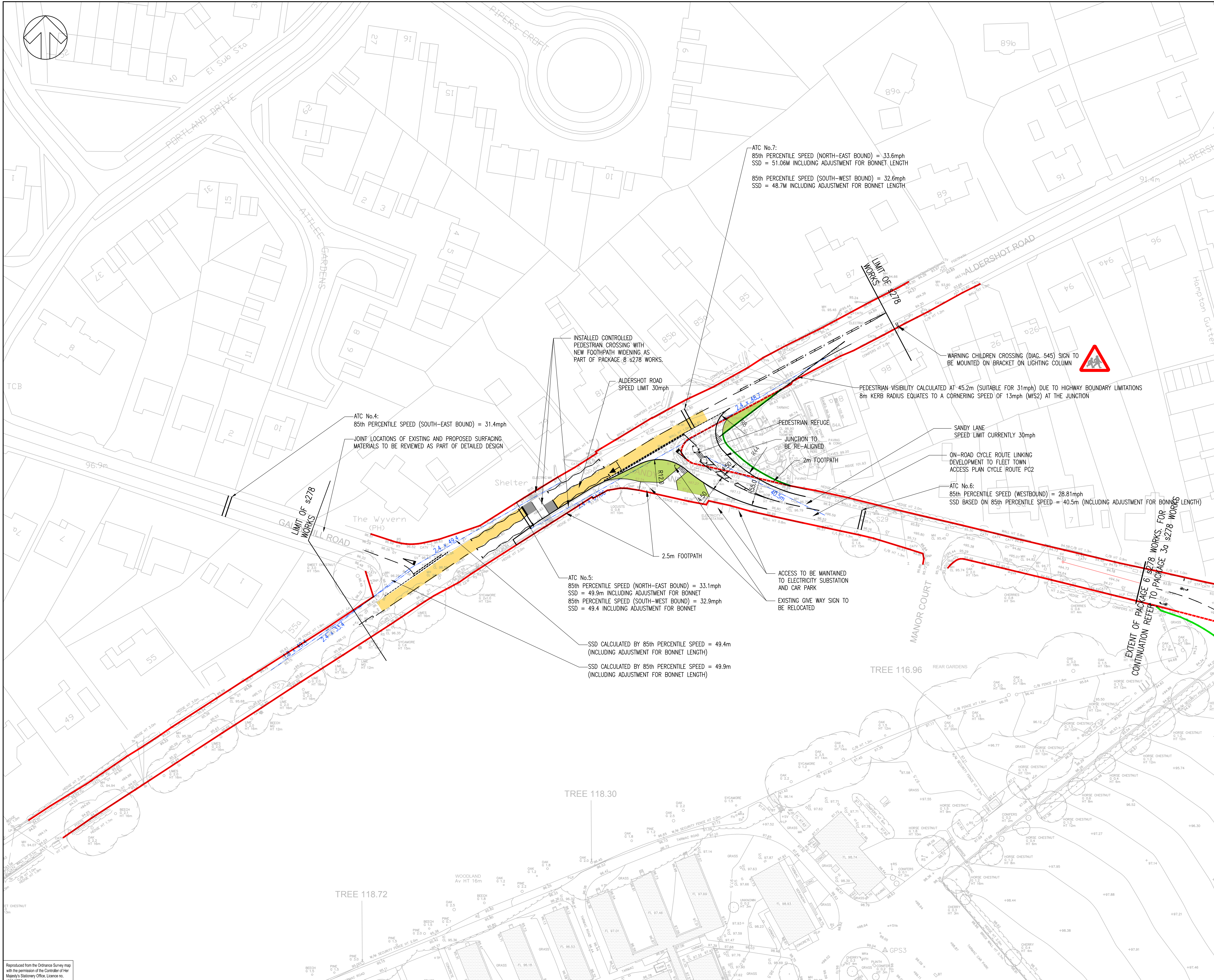
DO NOT SCALE

NOTES:

- HIGHWAY BOUNDARY INTERPRETED FROM HAMPSHIRE COUNTY COUNCIL RECORDS AND MUST BE CONFIRMED PRIOR TO SIGNING OF SECTION 278 AGREEMENT
- ALL DIMENSIONS ARE IN METRES UNLESS STATED OTHERWISE
- VISIBILITY REQUIREMENTS FOR THE JUNCTIONS ARE BASED ON MANUAL FOR STREETS (7.5 - 7.6).

KEY:

- CATEGORY 'A' TREES
- CATEGORY 'B' TREES
- CATEGORY 'C' TREES
- CATEGORY 'D' TREES
- EXISTING HIGHWAY BOUNDARY TO BE RETAINED
- EXISTING HIGHWAY BOUNDARY TO BE RELEASED
- PROPOSED HIGHWAY BOUNDARY
- PRIORITY JUNCTION VISIBILITY
- CAR TO PEDESTRIAN VISIBILITY
- PROPOSED VERGE
- TOUCAN CROSSING (s278 PACKAGE Bb) HIGH FRICTION SURFACING (BUFF)
- TOUCAN CROSSING (s278 PACKAGE Bb) HIGH FRICTION SURFACING (GREY)



REV	DATE	BY	DESCRIPTION	CHK	APP
E	25/01/2013	SJM	HCC COMMENTS-REVISED SANDY LANE GEOMETRY	JAM	LRS
D	10/10/2011	MB	TW COMMENTS - HIGHWAY BOUNDARIES AMENDED	LRS	TFK
C	28/09/2011	MB	RSA ST1 COMMENTS - VISIBILITY SPLAYS ADDED	LRS	TFK
B	24/08/2011	MB	DESIGN AMENDED TO SHOW CONTROLLED PEDESTRIAN CROSSING ON ALDERSHOT ROAD	LRS	TFK
A	25/01/2011	HL	FIRST ISSUE	LRS	TFK

DRAWING STATUS: FOR TECHNICAL APPROVAL

WSP
 Regus House, Southampton International Business Park
 George Curl Way, Southampton, Hampshire, SO18 2RZ
 Tel: +44 (0)2380 302000 Fax: +44 (0)2380 302001
 http://www.wspgroup.com

CLIENT: TAYLOR WIMPEY

ARCHITECT: DHA

PROJECT: QUEEN ELIZABETH BARRACKS

TITLE: s278 WORKS - PACKAGE 6
SANDY LANE / ALDERSHOT ROAD JUNCTION
GENERAL ARRANGEMENT

SCALE @ A1: 1:500	CHECKED: LRB	APPROVED: TFK
DWG FILE: 103-GA-351	DESIGN-DRAWN: HL	DATE: January 2011

PROJECT No: 11790103	DRAWING No: 103/GA/351	REV: E
----------------------	------------------------	--------

© WSP Group plc

J:\11790103 - QEB\DRAWINGS\AUTOCAD\GA GENERAL ARRANGEMENT\103-GA-351.DWG 25/01/2013 15:16:45 Allen-Morley, jim

Reproduced from the Ordnance Survey map with the permission of the Controller of Her Majesty's Stationery Office. Licence no. 10004735. Crown copyright reserved.